



**COOL AIR™**  
RENTALS LTD

## AIR COOLED EMERGENCY RESPONSE UNIT 10 TON with ELECTRIC HEAT



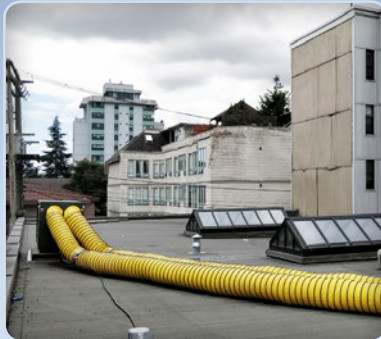
This purpose-built emergency response unit is the epitome of mobility. Forklift it, pallet jack it or crane it. This unit is built to military standards – it even has helicopter hook points. Everything from the ducts to the electrical cables and controls are self-contained within the unit itself, making it ideally suited to provide climate control solutions for temporary structures. This baby is built to perform.

### Features:

- Electric elements allow this unit to heat as well as cool
- Easy to understand controls ensure fool-proof field operation
- Weather-proof military grade construction
- Requires 208 volt three phase power

### Applications:

- Emergency Cooling & Heating
- Temporary Structures
- Disaster Relief



This application had us supplying air into the building through the existing roof top unit that was broken, except for the fan. We pushed our cooling into the fresh air vent and the fan unit circulated it into various parts of the building.



The loading dock platform of this facility was unbearably hot for the crew that worked just inside the doors. This 10 ton worked all day long, but really provided the relief when the late afternoon sun pounded down on the west facing doors.



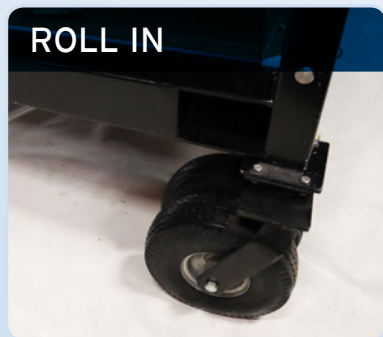
Cast and crew of this film production required cooling in this exposed tent during long shooting days. Filling this tent with piles of cool air ensured that the occupants remained comfortable and happy.

**REAL COOL. REAL FAST.**

# AIR COOLED INDUSTRIAL UNIT with ELECTRIC HEAT

## ACI10H23ER

COOLING		PHYSICAL	
Medium	Air	Controls	Local or Wired Remote Thermostat
Capacity (Btu)	120,000	Control Connection	MS2102R-16S1S 7 pin
Capacity (Ton)	10	Evaporator Air Flow	3200 CFM @ 0.3" Static
HEATING		Supply Air Duct	2-12" x 75' max
Medium	Electric	Return Air Duct	1-20" x 15' max
Capacity (Btu)	47,000	Condensation Collection	Gravity - 25' x 3/4" hose supplied
Capacity (KW)	14	Filter Type	Permanent Washable
ELECTRICAL		Filter Size	2 x 29.5" x 16.5" x 0.5"
(Two energy options, pls. specify)		Caster Type	Dual 10" Flat-free Swivel
Voltage	208 V	Dimensions - W	41.5"      105 cm
Phase	Three	Dimensions - D	83"        211 cm
Breaker Size (A)	70	Dimensions - H w/o casters	51"        130cm
Cooling Current Draw	40 FLA	Dimensions - H w/ casters	64.5"      164cm
Heating Current Draw	45 FLA	Weight	1195 lbs    542 kg
Plug - Cool Air Adapter	Cam-Lok		
Power Cord Length	2'		
Power Cord Wire Size	#2 AWG Sgl. Conductor C-Way		
Plug - Factory Option	MS31032R32-22P		
Power Cord Length	30' Connector X Bare End		
Power Cord Wire Size	#4 AWG 4 Conductor		



**ROLL IN**  
Housed in an aluminum frame, this unit can be moved into position by forklift, crane, or, with the caster assemblies in place, rolled.



**PLUG IN**  
Large, flexible duct runs carry frosty air to wherever it's needed.



**TURN ON**  
Well-labelled and easy to use rotary dials allow you to operate this unit without in-depth instruction.

We also rent hydronic, electric and indirect fired heaters, ventilation units, and pumps. Visit [www.cool-air.com](http://www.cool-air.com) for our full line of rental equipment.

**Vancouver**

604.253.4171

**Kelowna**

236.788.4354

**Edmonton**

825.535.3362

**Calgary**

1.855.253.4171

**Online**

[www.cool-air.com](http://www.cool-air.com)  
[info@cool-air.com](mailto:info@cool-air.com)

