



# COOL AIR™ HEAT

## HYDRONIC HEAT EXCHANGER- POTABLE & NON-POTABLE

1M & 2M BTU



This plate heat exchanger series is the perfect solution for delivering heat into a building. It is an ideal addition to our hydronic heating equipment that ensures a separate fluid loop between our heater and the building. Each unit is equipped with an onboard pump and can deliver hot fluid in any potable or non-potable application.

### Features:

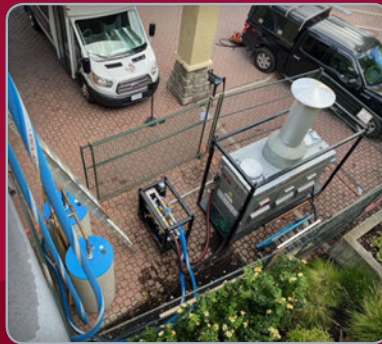
- Monitor supply and return loop temperatures
- On board pump with by-pass valve
- Compact design allows this unit to easily fit through any mechanical room door

### Applications:

- Boiler Tie-Ins
- Domestic Hot Water Applications
- Specialized Heating or Cooling Projects



When this municipal boiler system failed, Cool Air provided a 1.2M BTU hydronic heater and a 1M non-potable heat exchanger. The heat exchanger provided the physical separation between the hot loop and the building loop.



This potable application allowed the domestic hot water side of this residential building to stay viable during a planned shutdown. Residents had a reliable hot water source for cooking and showering. The stainless-steel heat exchanger is double walled and rated to be used in potable water applications, and we only release them to those very specific projects.



Another interesting use of our heat exchangers! This heating project was in an under-heated facility being used as an immunization centre. It required the use of only regular water running through hoses inside the space. We positioned our heat exchanger just inside the building, and ran glycol in the hot loop and clean water in the inside loop.

**HEAT...IN A HURRY**

# HYDRONIC HEAT EXCHANGERS - 1M & 2M BTU

## POTABLE & NON-POTABLE (HHX1000H21 | HHX2000H21)

HEATING		OPERATIONAL - GENERAL CONT.	
Capacity	Heating or Cooling	Circulation Loop Controls	Temp. Guage for Supply & Return
Capacity	1M BTU   2M BTU	Heating Fluid	H2O or Propylene Glycol
Temp. Set Range °F	-40 °F to 180 °F	Female Inlet	2" Camlock
Temp. Set Range °C	49 °C to 93 °C	Male Outlet	2" Camlock
ELECTRICAL		OPERATIONAL	NON-POTABLE
Voltage	208/240V	Hose Temp. Rating °F	-40 °F to 212 °F
Phase	Single	Hose Temp. Rating °C	-40 °C to 100 °C
Breaker Size	30 Amps	CRN	'OH15224.501246789, YTNA7104.3
Current draw	10.4 Amps   12.5 Amps	Hose Working Pressure 2"	G643-200 150 psi
Plug	Nema L6-30	OPERATIONAL	POTABLE
Power Cord Length	8'	Hose Temp. Rating °F	-22 °F to 212 °F
Power Cord Wire Size	10 Gauge	Hose Temp. Rating °C	-30 °C to 100 °C
OPERATIONAL - GENERAL		CRN	'OH19785.51346789YTN, Y3870.2
Pump - HP	2   3	Hose Working Pressure 2"	G1041-200 150 psi
Pump - RPM	3450	PHYSICAL	
Impeller	4.87"   5.25"	Controls	Local On/Off
Flow - Hot Side: Heater	68 GPM   137 GPM	Cabinet	Powder Coated Aluminum
Flow - H Target Temp. Supply	180 °F	Wheel Type	5" PVC on Heavy Duty Caster
Flow - H Target Temp. Return	150 °F   180 °F	Dimensions - W	25"   66 cm
Flow - Cold Side: Building	40 GPM   80 GPM	Dimensions - D	42"   107 cm
Flow - C Target Temp. Supply	150 °F	Dimensions - H	36"   92 cm w/o casters
Flow - C Target Temp. Return	120 °F	Dimensions - H	43"   109 cm w/ casters
		Weight	410 lbs   186 kg / 475 lbs   215 kg



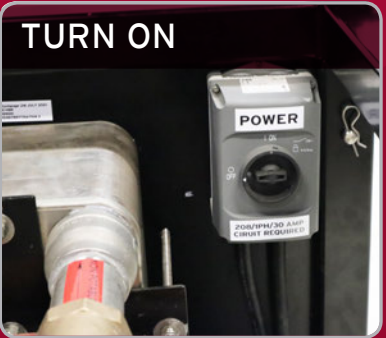
**ROLL IN**

Good quality casters and compact size make locating these units a breeze. Wheels can easily be removed so the frame can sit on a flat surface.



**PLUG IN**

2" Camlock hose fittings carry water or a glycol/water mix to your building's dedicated loop or to our portable fan coils.



**TURN ON**

Simple On/Off operation energizes our on-board pump. Don't need it, flip the by-pass valve and let your building pump do the work.

**We also rent industrial and portable air conditioning units, fans, and air movers.**  
 Visit [www.cool-air.com](http://www.cool-air.com) for our full line of rental equipment.

**Vancouver**

1407 East Georgia St.  
 Vancouver BC  
 604.253.4171

**Edmonton**

3816 56 Ave. NW  
 Edmonton AB  
 780.729.1685

**Calgary**

Depot: 4216 61 Ave. SE  
 Calgary AB  
 1.855.253.4171

**Online**

[www.cool-air.com](http://www.cool-air.com)  
[info@cool-air.com](mailto:info@cool-air.com)

