



COOL AIR™ RENTALS LTD

AIR COOLED INDUSTRIAL CHILLER

30 Ton



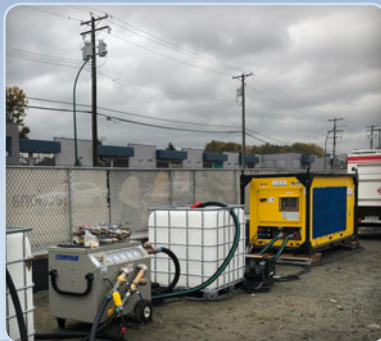
This relatively compact chiller is a great solution when you have a smaller heat or process load that you need to cool down. Match it up with our 30 ton air handler and you have a very efficient closed loop. Even standing alone and tackling a heat load that was previously a problem, this star performer really shines. When tricky building conditions make cooling difficult, this is one of the most effective options to get the cooling you need.

Features:

- Can be paired with our 30 ton air handler for convenient delivery of cool air.
- Can be hooked into an existing chilled loop system to replace a damaged or broken chiller.
- Positioning is simple; roll, forklift or hoist into place.
- Requires 208 volt three phase power.

Applications:

- Oil & Gas
- Manufacturing
- Film Studios
- Large Commercial Buildings



Concrete generates large amounts of heat while curing, a process known as hydration. Installing embedded cooling lines prior to pouring allows us to circulate chilled water throughout the slab and strip the heat away in a controlled manner. This 30 ton unit coupled with a 1000 litre tote ensured the curing process was successful and without issue.



During the middle of a winter season, this unit was used as part of a complex system to quickly cool down batches of soup to a temperature safe enough to package. Without our chiller, the factory would have needed to wait until the soup cooled naturally; which would add delays to their production cycle.



This 30 ton chiller was located outside a film stage. Relatively small and compact, it was quiet enough to run when they were recording sound. A closed loop of hose connected the chiller to one of our air-handling units inside. Flexible ducting easily directed the conditioned air to wherever it was needed.

REAL COOL. REAL FAST.

AIR COOLED INDUSTRIAL CHILLER - 30 Ton (ACC030)

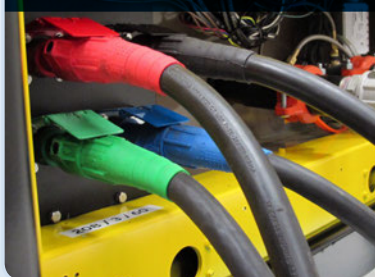
COOLING			OPERATIONAL LIMITS		
			MIN	MAX	
Capacity	360000	Refrigerant	Leaving Water Temp °F	40	70
Circuits	1		Leaving Water Temp °C	4.4	21.1
Ambient Operating Range	0 to 115 °F	-17.8 to +46.1 °C	Return Water Temp °F	40	70
Chilled Water Setpoint	45 to 55 °F	+7.2 to +12.8 °C	Return Water Temp °C	4.4	21.1
ELECTRICAL			Leaving Glycol Temp °F	10	70
Voltage	208		Leaving Glycol Temp °C	-12.2	21.1
Phase	Three		Return Glycol Temp °F	10	70
Breaker Size	175		Return Glycol Temp °C	-12.2	21.1
Current Draw RLA	108		Voltage 208/3/60	190	230
Minimum Circuit MCA	Min 135 - Max 150		Air on Condenser °F	0	125
Plug	Series 16 cam-lok inlets		Air on Condenser °C	-17	51.7
EVAPORATOR			Evaporator Flow GPM US	34	150
Fluid Connections	2" Camlok		Evaporator Flow L/s	2.2	9.5
Max. Water Side Pressure	150 PSI		Freeze Protection	Max-20 °F or -28 °C	
Evaporator Volume	3.2		PHYSICAL		
			Model	YCAL0033	
			Controls	Millennium Control Ctr.	
			Dimensions - Width	50"	127cm
			Dimensions - Depth	133"	338cm
			Dimensions - Height	57"	144cm
			Width w/ Casters	52"	131cm
			Depth w/ Casters	135"	342cm
			Height w/ Casters	63"	161cm
			Weight	3160lbs	1434kg
			Forklift Pockets	4" x 8"	100 x 203mm

ROLL IN



Heavy duty casters and good mobility make locating these units a breeze. Wheel assemblies are removable for forklift or crane placement.

PLUG IN



Convenient Cam-Lok connections make it easy to connect to 208 volt power and get the unit running fast.

TURN ON



Easy to follow touch screen controls allow you to tailor make how you operate this unit.

We also rent portable air conditioning units, fans, air movers, and industrial strength heating units. Visit www.cool-air.com for our full line of rental equipment.

Vancouver

1407 East Georgia St.
Vancouver BC
604.253.4171

Edmonton

3816 56 Ave. NW
Edmonton AB
780.729.1685

Calgary

Depot: 4216 61 Ave. SE
Calgary AB
1.855.253.4171

Online

www.cool-air.com
info@cool-air.com

