

CASE STUDY



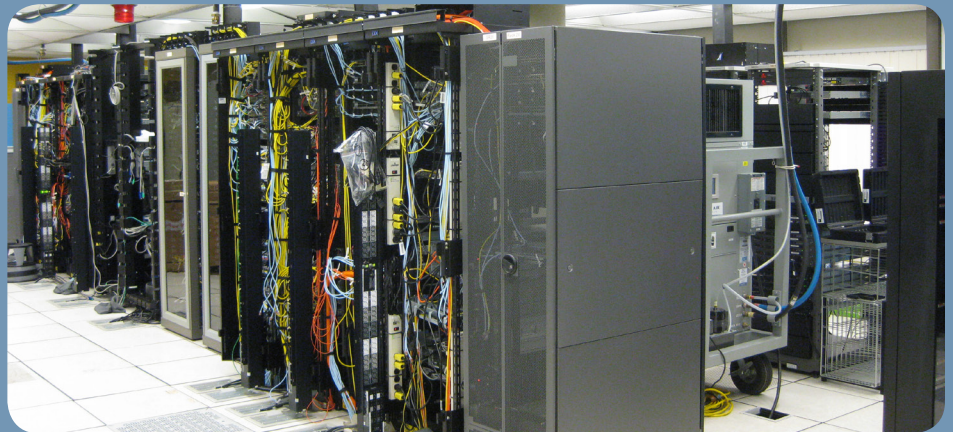
The Customer



"Based in Vancouver since 1957, Broadway Refrigeration has been designing, installing, and servicing commercial heating, ventilation, air conditioning, and refrigeration systems throughout B.C. and Alberta." They have trusted Cool Air for their temporary cooling and heating needs for over 15 years.
- <http://www.broadwayrefrigeration.com/>

Application

Temporary cooling was required for a server room while the dedicated DX system was completely upgraded which included the movement and ultimately the replacement of the existing air handling units.



REAL COOL. REAL FAST. GUARANTEED.

Call us today to see how simple a Cool Air solution can be.

Solution: Security and Reliability

Cool Air was contracted to provide 15 tons of cooling; a 10 ton unit and a 5 ton unit were located inside the server room. These water cooled units were fed from a domestic water source with high pressure supply, return and condensate lines suspended from the T-bar ceiling, keeping the floor clear. Water cooled units are ideal for this type of application providing large scale cooling while maintaining room security and safety, with nothing running through doorways or down hallways. Clean, effective, and problem free.



Result

Various delays with the new equipment meant that this job went longer than expected. Our equipment performed extremely well, temperature levels were maintained, and the servers didn't skip a beat. With no temperature issues, the end user was completely satisfied and their business, and ultimately their customers, were not impacted. Once the dedicated cooling system was replaced and tested, our equipment was removed leaving no trace that we were ever there.

Equipment

- One WCI10V23 - water cooled industrial 10 ton unit
- One WCI5V23 - water cooled industrial 5 ton unit
- 1100' of water hose
- 75' of electrical cable
- Full installation by Cool Air including planning, transportation, installation of equipment and removal of equipment upon job completion.

