



# COOL AIR™ HEAT

## THERMAL REMEDIATION - ELECTRIC

30 kW



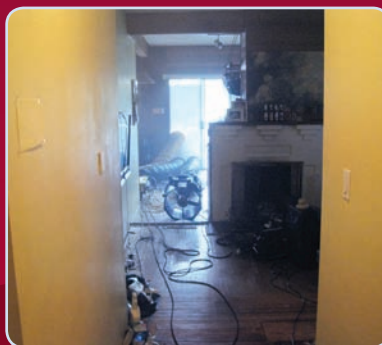
Thermal Remediation is an effective tool in a balanced pest management strategy. These electric furnaces offer a solution that other equipment does not. Portable electric units can be wheeled virtually anywhere, and coupled with the appropriate electrical source, provide the energy punch that this solution requires. Electric furnaces are either located in the space that is being treated, or they can be located outside the space, delivering the hot supply air through flexible duct.

### Features:

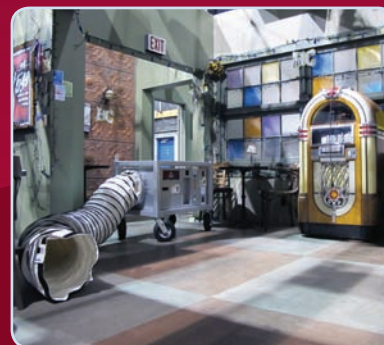
- Completely ready for simple electrical hook-up
- Dry, safe and quiet
- No hazardous exhaust or troublesome re-fueling problems
- Warm supply air is ductable up to 50' or supplied straight from the louvered plenum



Portable, quiet, and clean, these units are ideal for applications where the unit must sit in the room being treated.



With the aid of our powerful fans, hot air is delivered to the infested area. Convection heat evenly distributed will maximize the elimination of both adults and eggs.



Delivery and set-up of the thermal package is done quickly and effectively from our centrally located warehouse. We make sure your project is handled discreetly and professionally.

Bed bug infestations are a persistent and challenging problem. No one solution is completely effective in this large and growing problem; therefore, a balanced management plan must be implemented. Thermal Remediation (TR) is the process of rapidly raising the air and surface temperatures of the affected area to ultimately reach the thermal death point of both adult bugs and eggs. TR is a proven tool for a pesticide-free solution in the battle against pests. Cool Air will work with your CPO to give you positive results.

**HEAT...IN A HURRY**

# THERMAL REMEDIATION - ELECTRIC FURNACE

## 30 kW (HEF30H23)

HEATING		PHYSICAL	
Medium	Electrical Resistant	Controls	Push Button, Thermostat, Remote Control
Capacity	102,360 Btu's	Supply Air Flow	1800 CFM
Capacity	30 kW	Flexible Ducting	14" (<50'), 16" (>50')
ELECTRICAL		Filter Type	Box Style AP 7
Voltage	208	Filter Size	16" x 20"
Phase	Three	Caster Type	6" Flat-free
Breaker Size	100 Amps	Dimensions - Width	25"
Current Draw	78 Amps	Dimensions - Depth	37"
Plug	Cam-Lok	Dimensions - Height	34"
Power Cord Length	Receptacle on Unit	Weight	185 lbs

### ELECTRICAL



This power distribution box can be energized from either a range or dryer plug and provides a dedicated and reliable energy source to run the circulation fans.

### VENTILATION



With the ability to operate at elevated temperatures, these fans drive heat into areas where bugs hide. Our industrial fan package will evenly distribute the hot air for maximum results.

### MONITORING



The temperature of the infested area can be monitored and logged remotely to ensure that optimal levels are reached and sustained.

**We also rent industrial and portable air conditioning units, fans, and air movers.**  
Visit [www.cool-air.com](http://www.cool-air.com) for our full line of rental equipment.

### COOL AIR RENTALS LTD.

1407 East Georgia St  
Vancouver, BC  
Canada V5L 2A9

9531 42 Ave NW  
Edmonton, AB  
Canada T6E 5Y4

**Tel: 604.253.4171**

**Toll Free: 1.855.253.4171**  
Fax: 604.253.4173  
Email: [info@cool-air.com](mailto:info@cool-air.com)

